

2021+ SeaDoo RXPX 300 Rear Exhaust

Part No. WR04074

Suits Models:
• 2021+ RXP-X**Parts Supplied:**

- WR04074-1 Silicon Exhaust Hose
- Exhaust Outlet Retainer Ring
- 7 x M6 x 30mm Cap Head Bolts
- Exhaust Outlet
- 1 x M6 Nyloc Nut
- Exhaust Block Off Cap

Tools Required:

- Blue Loctite
- Marine Sealant
- Electric Drill
- 6mm Drill Bit
- 79mm (3 1/8") Holesaw
- T27 Torx Bit
- 5mm Hex Key
- 10mm Spanner

IMPORTANT: READ ALL INSTRUCTIONS BEFORE PROCEEDING WITH INSTALLATION

INSTALLATION INSTRUCTIONS:

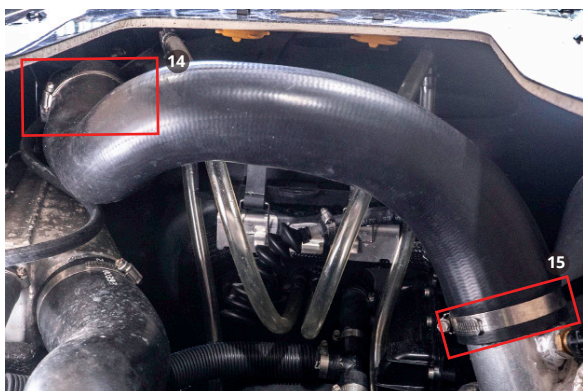
1. Make sure ski is secure and on a flat surface. Remove lanyard and disconnect battery.

2. Pull the rear plastic and seat housing off the ski.

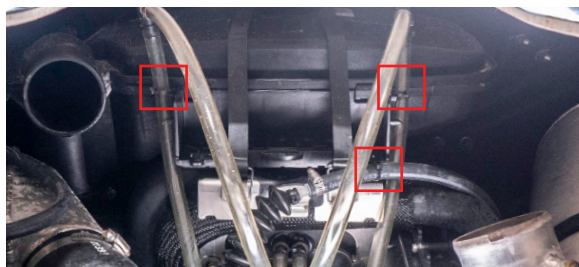
3. Undo and remove the labelled bolts⁽¹⁻¹³⁾ with a torx bit.



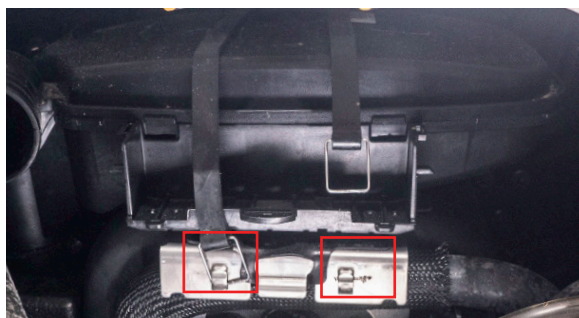
4. Disconnect OEM Exhaust Hose and retain hose clamps⁽¹⁴⁻¹⁵⁾.



5. Cut and remove the zip ties shown before moving the hoses out of the way.



6. Unclip the straps securing the resonator box in place.



7. Undo hose clamp⁽¹⁶⁾ pictured before removing the resonator box.
TIP: Pull the resonator up and rotate the right side of it towards the front of the ski before pulling it from the cavity.



8. Place the exhaust block off cap in the OEM exhaust outlet hose before retightening the hose clamp.



9. Remove the ladder attachment on the rear left side of the hull, retain bolts and nuts



10. Line up the template (page 4) with the three holes from the ladder attachment.

PLEASE NOTE: You should now line up the exhaust with the waterbox and outlet location to ensure everything is correct before drilling and making permanent modifications.

11. Using a 6mm drill bit, make a pilot hole for your hole saw.



12. Using a 79mm hole saw, slowly drill out the hole for your exhaust outlet.



13. Place the Worx Exhaust outlet through the whole and ensure it is rotated as pictured below. Holding the outlet firmly, use a 6mm to drill out your bolt locations.

TIP: Drill out the location for the two bolts pictured below⁽¹⁷⁻¹⁸⁾, before inserting them and using them to ensure the outlet stays in the correct position while drilling out the final four bolt⁽¹⁹⁻²²⁾ holes.



14. Run a bead of marine silicone around the lip of the exhaust outlet.



15. Place the retainer ring behind the outlet hole and slide the exhaust outlet through it. Begin lightly tightening the bolts through the outlet and ring a little at a time before finally securing them tightly.



- 16.** Attach the hose from the waterbox to the new outlet and use OEM hose clamps to fasten each end securely.



- 17.** Using a supplied M6 Nyloc Nut and Bolt, plug the remaining hole left by the ladder attachment. Silicone can be used if any water leaks through.
- 16.** Ensure all connections are tight and secure before reinstalling all panels and seat.



WR04074 TEMPLATE

